



**Headteacher:** Mrs L Ingham

**Tel:** 01282 457235

**Web:** [www.basnettstreet.lancs.sch.uk](http://www.basnettstreet.lancs.sch.uk)

**Facebook:** [www.facebook.com/basnettstnursery](http://www.facebook.com/basnettstnursery)

**Friday 3rd October 2025**

## What we have been learning...

This week we have started to read our core text "Owl Babies". In our key worker groups we have explored how leaving our loved ones can be challenging and how it might make us feel sad and worried. We thought about the different ways we could communicate that we are sad or worried with our trusted adults in Nursery and ways our adults could help us to regulate our emotions.

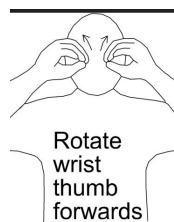
Whilst reading "Owl Babies" the children have been thinking about what we might find in the outdoors. We have been hunting for conkers and investigating the fallen leaves.



Each week we are going to introduce a new Makaton sign. Makaton is a unique communication programme that uses symbols (pictures), signs (gestures) and speech to enable people to communicate. It supports the development of essential communication skills such as attention and listening, comprehension, memory, recall and organisation of language and expression.

**Our Makaton Sign of the week this week is:**

**Owl**



As we introduce our new core text "Owl Babies"

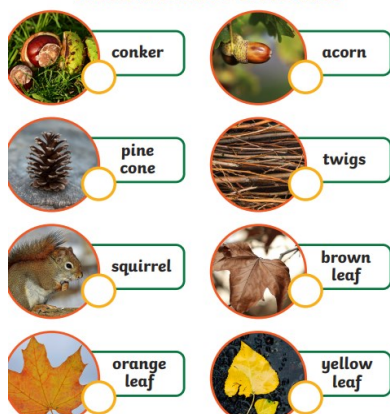
## Fruit Sharing

We like to promote healthy eating and encourage the children to eat different kinds of fruit and vegetables at snack time.

Please help us by bringing in some fruit or vegetables every week for your child to share. Please put it in the basket in the foyer.

Thank you for your support.

### Autumn Hunt Checklist



### Home learning

This time of year is perfect for exploring the different signs of Autumn. You could take your child on an Autumn walk and point out how the world is changing around them: leaves falling to the ground, colder weather, changing colour of leaves, conkers, acorns etc.

### Primary School Admissions

Don't forget if your child is starting primary school in September 2026, the deadline is 15th January 2026. You can submit your application online via the [Lancashire County Council website](#). If you need any help with the form, we have someone coming into nursery to help. This is on **Thursday 20th November between 11.30am—1pm**. There is no need to book an appointment, just call into nursery between those times.

### Flu Vaccinations

Don't forget to complete the form and return it to nursery by Wednesday 8th October. Your child can have the nasal vaccine or if you do not accept medicines/vaccines that contain porcine gelatine (derived from pigs), a flu vaccine injection that does not contain gelatine is available. The date for the vaccinations is Friday 5th December.

### Nursery School Fund

Please remember to pay the weekly £3 fund. This can be paid weekly or termly, in cash or by bank transfer. All money goes to resources used by the children. Thank you.

### Absence

If your child is unable to attend nursery, please contact the office before 9.30 on the day of absence. You can leave a voicemail on the phone if lines are busy. Tel: 01282 457235

**East Lancashire**  
Learning and Information Exchange  
equalityanddiversity@lancashire.gov.uk

**ARE YOU A FAMILY THAT IS NEW TO LANCASHIRE?**  
**DO YOU NEED SUPPORT WITH GETTING A SCHOOL PLACE? OR GETTING READY TO JOIN A NEW SCHOOL?**

We can help with ... Preparing your child for school  
Understanding how schools and education work  
Choosing a school  
Learning basic skills and improving English language skills  
Finding out about your new area and getting to know people locally

**Visit us at our drop-in:**  
Monday to Friday, 9am- 1pm  
(Term Time only)  
**ELLIE at Burnley Campus**  
Barden Lane  
Burnley  
BB10 1JD

**This is a first come first served basis,  
please arrive early to avoid disappointment.**

### Key Dates

**Thursday 23rd October**—nursery closes at the end of the day for half term.

**Monday 3rd November**—nursery reopens at 8.40 am.