



**Headteacher:** Mrs L Ingham

**Tel:** 01282 457235

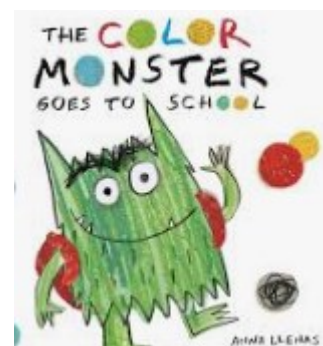
**Web:** [www.basnettstreet.lancs.sch.uk](http://www.basnettstreet.lancs.sch.uk)

**Facebook:** [www.facebook.com/basnettstnursery](http://www.facebook.com/basnettstnursery)

**Friday 18th July 2025**

## What we have been learning...

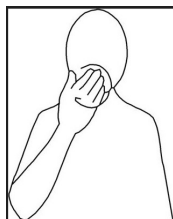
We have been talking about our school transitions and getting ready for our next step. The children have been very helpful making the Chatterbox children feel at home during their transition visits to the Nursery. We have been talking about how Colour Monster felt a little worried before he started school but during his first day he enjoyed lots of different activities. This allowed the children to share their own feelings and experiences of going to their new school, meeting their new friends and their new teachers. We have turned our role play area into a 'school area', where the children have loved trying on new uniforms and playing 'teachers'.



Each week we introduce a new Makaton sign. Makaton is a unique communication programme that uses symbols (pictures), signs (gestures) and speech to enable people to communicate. It supports the development of essential communication skills such as attention and listening, comprehension, memory, recall and organisation of language and expression.

**Our Makaton Sign of the week this week is:**

**School**



As we discuss the next step in our/our friend's journey.

## Attendance

10/07—17/07

Gillian(am)	98.5%
Suzanne(pm)	93.9%
Kiran	89.0%
Beth/Kate(am)	87.9%
Emma(pm)	87.5%
Beth/Kate(pm)	86.4%
Emma(am)	84.9%
Gillian(pm)	84.9%
Suzanne(am)	84.7%

Well done to Gillian's morning group for the best attendance.

### Library books

We are now collecting all library books back before the end of term. If you have not already returned your child's library book, please return it to school. There is a £5 charge for unreturned books. Thanks.



### Nursery places still available

We still have some morning, afternoon and 30 hour spaces available in nursery from September 2025. Please help us by recommending us to all your family and friends looking for a nursery place. We take children from 2 years, working in partnership with the Chatterbox Club and from September we will be offering 2 year olds access to weekly 30 hour sessions (subject to eligibility).

### We need your help!

We are seeking interesting little containers and curious items to go inside them!

These can be anything as long as they are safe items and could be intriguing to a young child (little treasures hidden around the house!)

The containers need to be quite small and have a lid that closes. This could be a clip, zip, top anything as long as it can be closed and opened.

So bring in your curious items for us to explore!

Thank you for your continued help and support!

### Parental Questionnaires

We would like to thank everybody who completed the parental questionnaire. Every questionnaire will be read and feedback will be acted upon to support us to further improve our school.

It has been great to read that 100% of our parents feel that Basnett Street has supported their child to be primary school ready and that you have all found Basnett Street to be a welcoming and friendly place.

Our main aim is to ensure your children get the best start to their education and that this is achieved in a safe and happy environment. We feel proud to have achieved this with the support of our families around us.

### Facebook

Did you know Basnett Street Nursery has a Facebook page? Please visit [www.facebook.com/basnettstnursery](https://www.facebook.com/basnettstnursery) for more details on what is happening in nursery.

### Goodbye and Good luck

Finally, we wish all our children and families all the very best for the future. We are confident that each and every child is ready for their next stage of education.

### Key Dates

Games day: Monday 21st July

Party and ice-cream day: Tuesday 22nd July

Final day of the term: Tuesday 22nd July . *Please note the change in times for this session (8.45 - 11.40am or 12.40 - 2.40pm)*

Children return to nursery—Monday 8th September.