



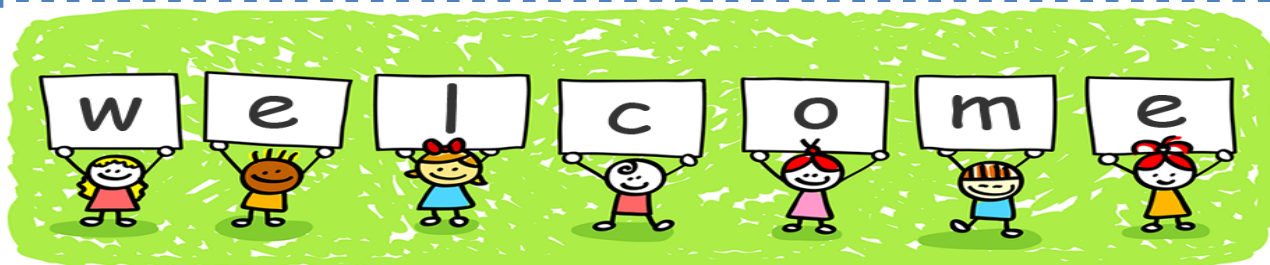
Headteacher Mrs L Ingham

Tel: 01282 - 457235

Web: www.basnettstreet.lancs.sch.uk

Facebook: www.facebook.com/basnettstnursery

Friday 16th September 2022



We would like to offer a warm welcome back to all our families including the new ones who have joined us in September. We look forward to working together and giving your child a wonderful experience at Basnett Street Nursery School.

Reminder for Parents

Is your child due to start school in September 2023? Have you applied for your primary school place? You need to apply online at:

www.lancashire.gov.uk/schools by the 15th January 2023.



Fruit Sharing at Snack Time.

We like to promote healthy eating and encourage the children to eat different kinds of fruit at snack time.

Please help us by bringing in a piece of fruit every Monday for your child to share.

Due to a child having an allergy, please do not send any **blueberries** in.

££ Weekly School Fund ££

We collect £2.50 per week, this money helps us to buy lots of different resources so that we can give the children lots of new experiences. We hope you can support us and you can either pay weekly or for the full term. Online payments are welcomed using the bank details below and put your child's name as the reference. It is £17.50 for this term.

Thank you.

HSBC

Account Name: Basnett Street Nursery School Fund

Sort Code: 40-15-17

Account number :02014211



The nursery doors close at 9.00am and 12.55pm for group time.

Group time lasts for 15 minutes and so that the children are not disturbed, please can we ask if you arrive late that you wait outside and sit on the benches.

Many thanks for your co-operation.



Nursery Back Pack & Spare Clothing

Please can we ask that parents send in a bag everyday with your child. Please include a full set of clothing, socks, underwear and spare nappies if your child is still using them. Also can we ask parents to check the bag at the end of the nursery session as any wet clothing will be put back into the bag to come home.

Reminder



We are a LCC School and we have a no smoking policy in place.

This also includes E-Cigarettes.

Thank you.



To ensure the safety of all our children, please can we ask that you do not move the yellow no parking signs or park on the yellow zig zags outside the Nursery School.

Also the staff car park is out of bounds, therefore can we ask that all parents access the nursery using the main entrance.

Thank you for your co-operation.