



**Headteacher:** Mrs L Ingham

**Tel:** 01282 457235

**Web:** [www.basnettstreet.lancs.sch.uk](http://www.basnettstreet.lancs.sch.uk)

**Facebook:** [www.facebook.com/basnettstnursery](http://www.facebook.com/basnettstnursery)

**Friday 16th January 2026**

## What we have been learning...

This week the children have enjoyed reading our new story “We’re Going on a Bear Hunt”. We have been exploring the different settings within our story through sensory play. We also went on our own bear hunt in the outdoors, going through the ‘Swishy Swashy’ grass, jumping in muddy puddles as we crossed the cold river and oozy mud. We found the bear who was hiding in our Willow Den!

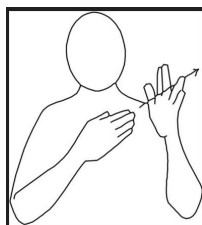


This week Concept Cat came to teach us all about “**through**”. We have explored what “through” means within different contexts such as going **through** the tunnel as we practise our crawling or putting our hands **through** the sloppy slime.

Each week we are going to introduce a new Makaton sign. Makaton is a unique communication programme that uses symbols (pictures), signs (gestures) and speech to enable people to communicate. It supports the development of essential communication skills such as attention and listening, comprehension, memory, recall and organisation of language and expression.

**Our Makaton Sign of the week this week is:**

**through**



## Attendance ( 5/1—15/1)

Retreat (pm)	95.5%
Beth/Kate (am)	91.9%
Gillian (am)	90 %
Suzanne (am)	88.8%
Retreat (am)	86.9%
Katie (pm)	85.2%
Suzanne (pm)	85 %
Katie (am)	84.7%
Kiran	83.2%
Beth/Kate (pm)	73.5%
Gillian (pm)	69.7%

## Nursery School Fund

We ask for a donation of £3 per week to help fund our exciting activities such as baking, parties, special events and keeping our resources topped up. This can be paid in cash at reception or via bank transfer. Thank you.

Well done to the afternoon Retreat group for having the best attendance over the last two weeks.

### Home activities

This week we have been practising our crawling skills which strengthen our core muscles. At home you could practise songs such as 'Row Row Row Your Boat' to help strengthen core stability, which is a key skill to support children's writing skills.

### Lancashire Family Hubs Network (Burnley)

Please go to the link below to see what's on in Burnley. There is also a copy of what's on in the nursery foyer noticeboard.

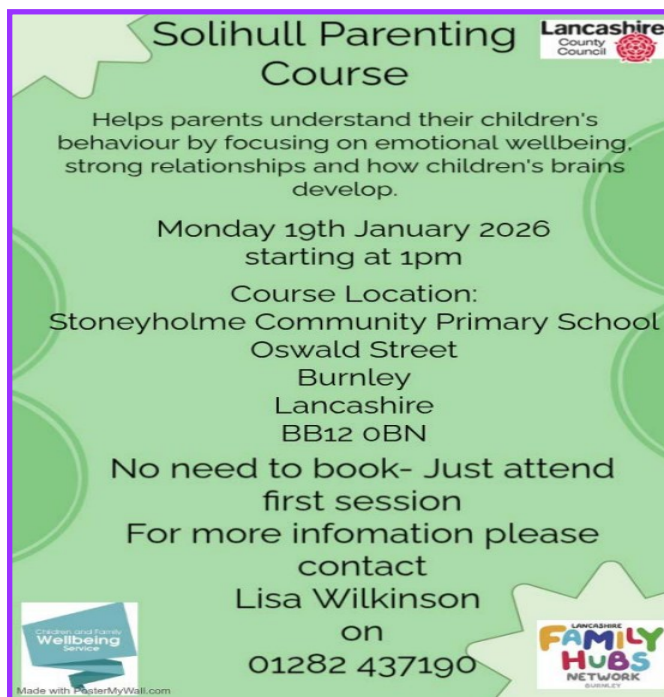
<https://lancashire.gov.uk/children-education-families/family-hubs/>

### Fruit/vegetables

Don't forget to bring some fruit/vegetables in for everyone to share. Please do not bring kiwi fruit as a child in nursery has an allergy to kiwis. Thanks.

### 30 hour children

Please can we remind parents of children who stay at nursery for 30 hours, the door opens between 9.40—9.50am. Thank you.



**Solihull Parenting Course** 


Helps parents understand their children's behaviour by focusing on emotional wellbeing, strong relationships and how children's brains develop.

Monday 19th January 2026  
starting at 1pm

Course Location:  
Stoneyholme Community Primary School  
Oswald Street  
Burnley  
Lancashire  
BB12 0BN

No need to book- Just attend first session

For more information please contact  
Lisa Wilkinson  
on  
01282 437190

Made with PosterMyWall.com



**Lancashire Family Hubs Network (Burnley)** are now using a new service for their online request for support form, the Lancashire children and families service. The first time you use this service, you must register for a children and families service account. Once registered, you must log in to submit further requests for support.

### Key Dates

**Thursday 12th February—nursery closes at 3.40pm for half term.**

**Friday 13th February—staff training.  
Nursery closed to pupils.**

**Monday 23rd February—nursery reopens.**